

# THE BEREANS

ACTS 17:11

**Ephesians 6:16**  
**Lesson #51**  
**Getting the shield up**  
**08/05/2018**

**Ephesians 6:11**

“Put on the full armor of God so that you will be able to stand firm against the schemes of the devil.”



1

**Eph. 6:16**

“in addition to all, taking up the shield of faith with which you will be able to extinguish all the **flaming missiles** of the evil one.”



2

## “Flaming missiles” (applied)

**Promote unrealistic expectations.**

If God loves me He will keep my commandments.

**Confuse emotions with the Spirit.**

If it feels good, it's of God.

**Look at the evidence.**

If it works for me, it's of God.

**Exclude those who do not fit my expectations.**

There are two types of people - those who are like me and those who should be like me.

3

## Faith Basics

- Everyone has faith **in something**.
- Misplaced faith is the heart of **idolatry**.
- Faith is activated with **commitment**.
- Faith has a **rational foundation**.
- Faith involves **risk**.

4

## We all have light and sight.

**Romans 1**

“20 For since the creation of the world His invisible attributes, His eternal power and divine nature, have been **clearly seen**, being understood through what has been made, so that they are without excuse. . . . 25 For they **exchanged** the truth of God for a lie, and **worshiped and served the creature rather than the Creator**, who is blessed forever. Amen.”

**Our 1st response was to exchange it for a lie.**

**The Gospel's call is to repent of our 1st response.**

5



**A robust, healthy faith is:**

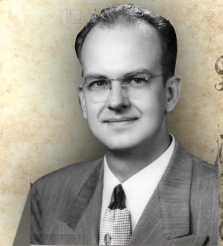


- ✓ Intellectually **convincing**.
- ✓ Emotionally **satisfying**.
- ✓ Morally **transforming**.
- ✓ Socially **connecting**.
- ✓ Culturally **inspiring**.

6

“The Christian worldview **makes better sense** of my inner and outer worlds than any of the alternatives.”

Edward Carnell



7

“Christianity does not simply make sense **to** us; it also makes sense **of** us.”

*Surprised by Meaning*

Alister McGrath



8

“I know the sun exists not because I can see it but rather that **by it I see everything else**.”

C.S. Lewis



9

*John 6:68*

“Simon Peter answered Him, “Lord, to whom shall we go? You have words of eternal life.””

***What are spiritual shields made of?***

- ★ **The resurrection of Christ**
- ★ **The big questions of life**
- ★ **The commitment to follow**
- ★ **Understand God’s grace**
- ★ **Knowledge of Scripture**

10

*John 6:68*

“Simon Peter answered Him, “Lord, to whom shall we go? You have words of eternal life.””

- ***The resurrection of Christ***

*1 Corinthians 15:17*

“<sup>17</sup> and if Christ has not been raised, your faith is worthless; you are still in your sins. <sup>18</sup> Then those also who have fallen asleep in Christ have perished. <sup>19</sup> If we have hoped in Christ in this life only, we are of all men most to be pitied.”

11



*John 6:68*

“Simon Peter answered Him, “Lord, to whom shall we go? You have words of eternal life.””

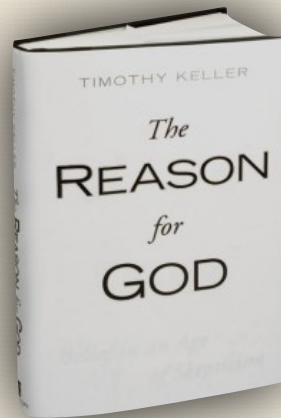
• **Addressing the big questions:**

- ★ **Mortality** - Why do we die?
- ★ **Meaning** - What do we live for?
- ★ **Morality** - Why do we do good?
- ★ **Misery** - Why are we anxious angry & empty?
- ★ **Management** - Why can't we get it together?

12

We have  
**Clues & Evidence**  
(not Proofs)

Proofs come with  
**Commitment.**



13

**Faith by definition  
is not a certainty**

but rather a **commitment**  
based on plausible **evidence**  
that becomes a **conviction**  
that we **base our life on.**

14

*Matthew 6*

“<sup>19</sup> Do not lay up for yourselves treasures upon earth, where moth and rust destroy, and where thieves break in and steal. <sup>20</sup> But lay up for yourselves treasures in heaven, where neither moth nor rust destroys, and where thieves do not break in or steal; <sup>21</sup> for **where your treasure is, there will your heart be also.** <sup>22</sup> The lamp of the body is the eye; if therefore your eye is clear, your whole body will be full of light. <sup>23</sup> But if your eye is bad, your whole body will be full of darkness. If therefore the light that is in you is darkness, how great is the darkness!”

15

**Christian Faith**

**Vision** - seeing the light.

**Commitment** - making a choice.

**Investment** - getting skin  
in the game.

**Passion** - watch your  
heart follow your treasure.



16

**7 scary things a disciple of  
Jesus should never do.**

- Treat the world as a spiritually safe zone.
- Take time off from being a disciple.
- Grow horns rather than antenna.
- Avoid anyone who may disagree with you.
- Live in isolation from other believers.
- Live in a fantasy world without honest doubts, hard questions, and gray areas.
- Expect faith without commitment.

17